

【Activate① Biology(2.2) Gas exchange】

Q1. Explain about how air travels through your mouth & nose and ends up in the blood around your lung with this diagram

move down / move through / move into

①

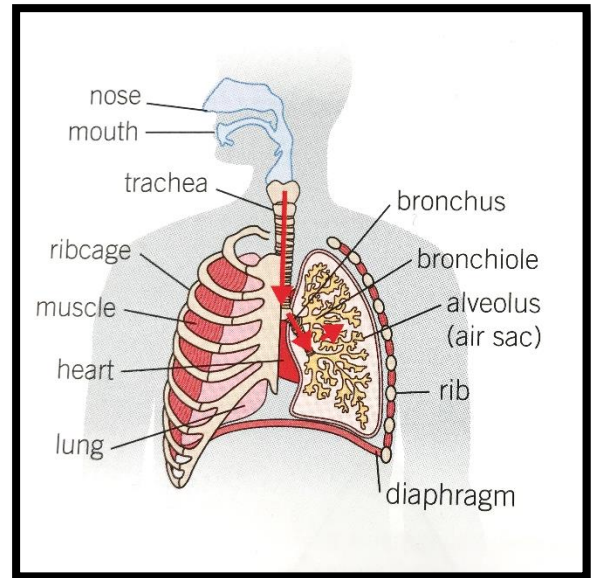
②

③

④

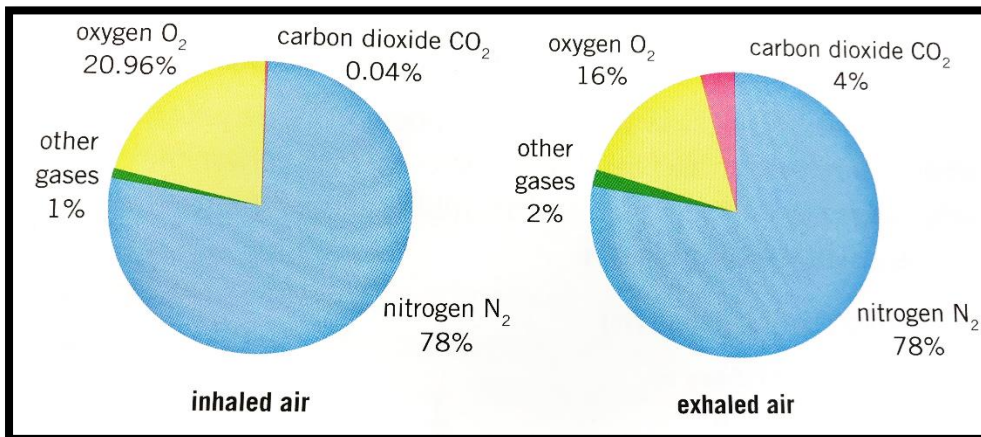
⑤

⑥



Q2. What is described by these pie charts? Explain it.

respiration / produce / inhale / exhale



Q3. Why can you see your breath on a cold mirror?

vapor / steam up / contain

